

Public Art

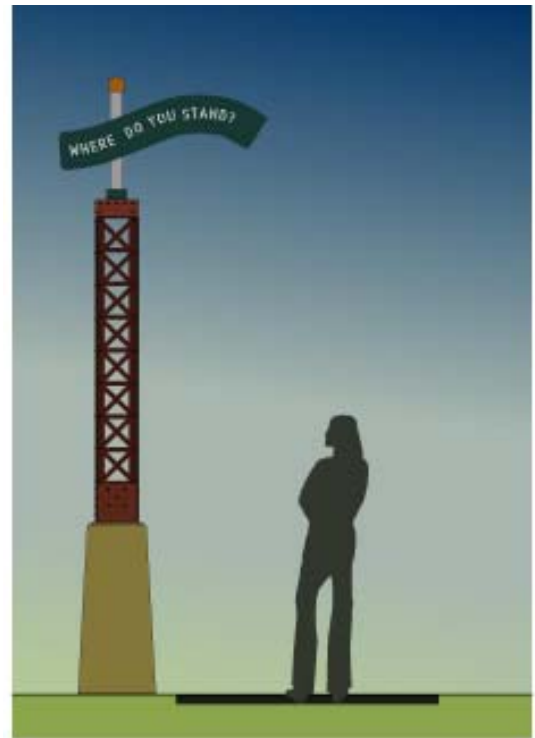
Ingraham & Associates and fellow artist Teri Kwant have worked as a team on multiple public art projects in the Twin Cities area.

Completed in 2003, the Pathway to Peace project links Lyndale Farmsted Park to the peace gardens near Lake Harriet with a series of seven cairns that mark this pathway. The cairns are made of limestone with different types of smaller stones piled as ancient pathway markers would have years ago.

The two mile stretch of pathway, the Midtown Greenway, is a former railroad bed that links the Hiawatha LRT line to the Mississippi River in Minneapolis. Five sculptures were designed as functional pieces based on the theme of personal journey. They are made out of limestone, concrete, steel and bronze functioning as seating, signage and guide posts. The design details reflect the railroad and history of the trail corridor.

The City of Fargo Noise Wall was designed as a gateway mural for the sound wall along I-94. I&A developed concept designs that reflected North Dakota's agricultural products and heritage to be cast into the concrete wall.

Reference: Mary Altman
Public Arts Administrator
350 South Fifth Street
City Hall, Room 210
Minneapolis, MN 55415
(612) 673-3006



Greenway Public Art: Personal Journeys
Revised GuidePost (Site # 1)
Cing Ingraham and Teri Kwant
March 2003

Midtown Greenway Guidepost
Minneapolis, MN



I-94 Soundwall Gateway Design,
Fargo, ND



One of the seven cairns marking
the Pathway to Peace in Lake
Harriet Park, Minneapolis, MN