

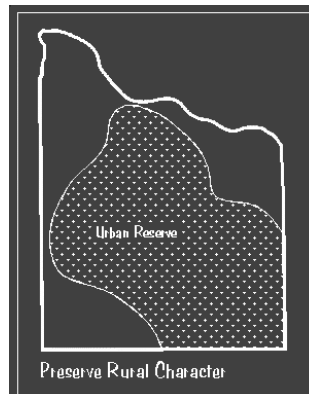
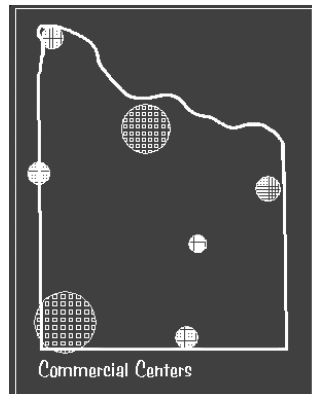
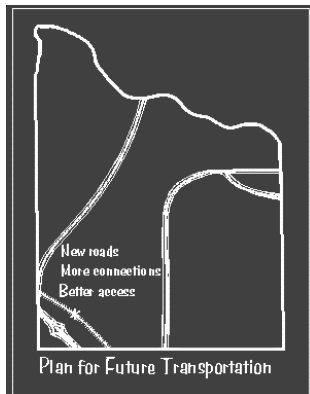
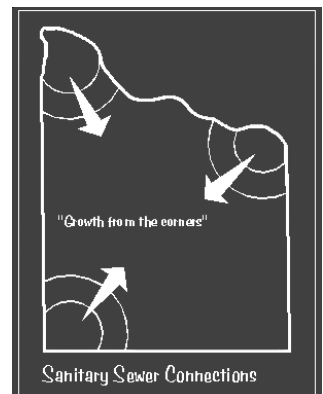
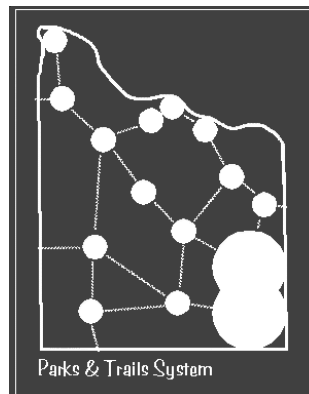
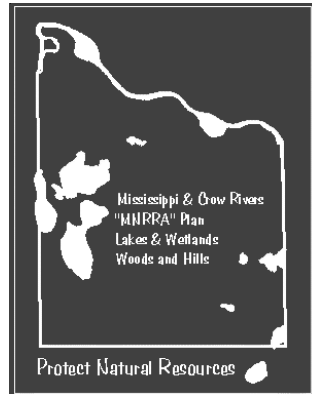
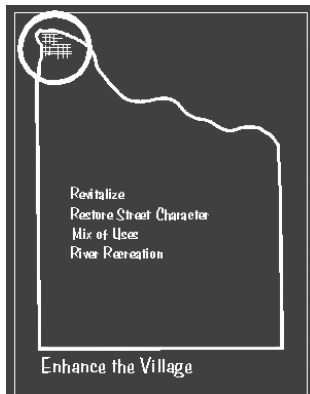
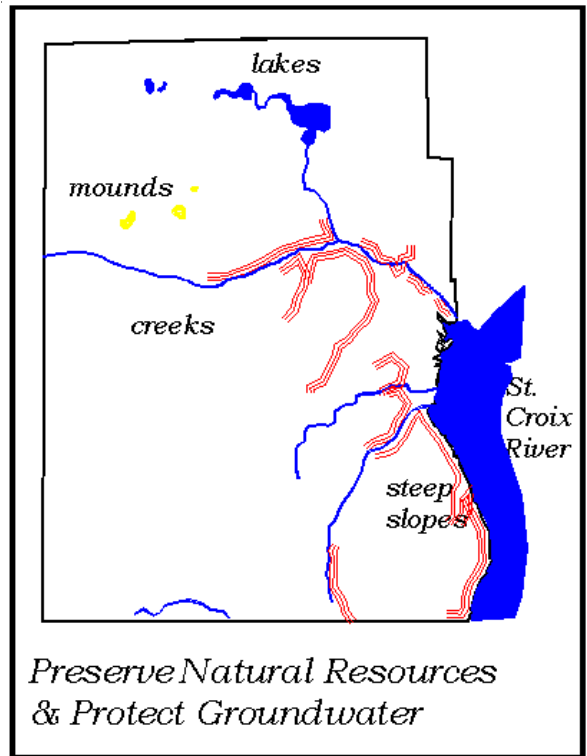
Comprehensive Plan

Dayton, Minnesota

Ingraham & Associates prepared the Comprehensive Plan for this growing city of 5,000 people. Work involved analysis and recommendations for land uses, densities, housing strategies, utility service and phasing, municipal facility needs, environmental protection, parks & open space, long-term goals and capital improvement plans.

Dayton is transitioning from a rural community to a developing suburb. The City wanted to have stable growth, while retaining rural character. The planning effort involved extensive public participation to develop a land use plan designed to meet local and regional needs. The plan is based on the environmental and infrastructure capacities and is designed to create a sustainable future.

We worked closely with City and Met Council staff to adjust the plans to meet the Regional Blueprint policies and system plan needs.



Dayton Land Use Concept Diagrams